



## Lever Extension Flush Bolt With Bottom Fire Bolt No. 557 x 19BFB

- Material:** Flush bolt – brass  
Bottom fire bolt – stainless steel
- Finishes:** Available in standard architectural finishes (see page 9)
- Fastener:** 7 ea. #8 x 3/4" FH combo screws  
4 ea. #8 - 32 x 1/2" FH MS  
4 ea. #8 counter sunk washer
- Features:**
- For Fire Rated Plastic & Wood Covered Fire Doors measuring up to 4'w x 9'h rated up to 20 minutes
  - 3/4" bolt throw, 3/4" backset; door strength maintained by corner reinforcing plate
  - When door is subjected to 230°F the plug and black plastic cover will melt allowing the bolt to project, locking the leaves together
  - Bottom fire bolt eliminates need for floor prep
  - Oversize fire bolt strike hole allows for slight door misalignment

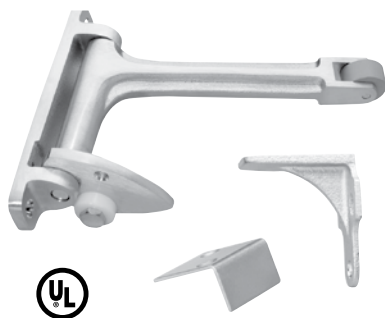
No.	Size	Weight
557 x 19BFB	Top bolt: 1" x 6 3/4" Bottom bolt: 1 3/16" dia.	0.9 lbs.



## Dust Proof Strike No. 570

- Material:** Brass
- Finishes:** Available in standard architectural finishes (see page 9)
- Fastener:** Adjustment nut  
Spanner wrench  
2 ea. #8 x 1 OH SMS, 2 ea. plastic anchors  
2 ea. #8 - 32 x 3/4" OH MS, 2 ea. lead anchors
- Features:**
- Works with all Rockwood manual and automatic flush bolts
  - Removable face plate for use with thresholds
  - Adjustable height for carpeted areas

No.	Size	Weight	ANSI A156.16
570	Face plate: 1 3/8" x 2 7/8" Barrel: 7/8" dia. x 2" depth	0.4 lbs.	L04021



## Gravity Door Coordinator No. 576

- Material:** Cast brass
- Finishes:** Available in standard architectural finishes (see page 9).
- Fastener:** Body: 2 ea. #10 x 1" FH SMS, 2 ea. #10 - 24 x 1" FH MS  
Strike: 5 ea. #8 x 1" FH SMS
- Other:**
- For use on door sizes:
    - with Astragal on active door – 18" to 48"
    - with Astragal on inactive door – 18" to 34"
    - with Astragal on both doors – 18" to 30"
  - The overlap of the astragal is maximum 7/8" with door hung on standard hinges. Customer must contact the factory for all other astragal situations
- Features:** Non-handed reversible. Prevents the active door from closing until the inactive door is closed

No.	Size	Projection	Weight	ANSI A156.3
576	1" x 5 7/16"	7"	2.2 lbs.	Type 21

**ASSA ABLOY**

The global leader in door opening solutions